

EPOTREAD™ W50 CLEAR

Premium epoxy floor sealer

Revised May 2020

DESCRIPTION

Epotread W50 Clear is a two-pack heavy duty waterbased epoxy coating manufactured with the latest epoxy resin technology, specially formulated to an equal part 1:1 ratio ensuring speed and accuracy for the applicator.

Epotread W50 Clear is used extensively for floors of showrooms, workshops, diamond cut concrete and stone, factories and warehouses throughout New Zealand, providing a very hardwearing and chemical resistant finish.

PRODUCT FEATURES

- Durable and hardwearing
- Incredible adhesion to stable concrete
- Non-toxic and solvent free
- Apply by brush, roller or airless sprayer
- Excellent chemical resistance
- Easy 1:1 mix ratio (Part A and Part B)
- Resists hydrostatic pressure when cured

USE AREAS

- Floors of showrooms, workshops, warehouses...
- Diamond cut or acid etched concrete floors
- Concrete protection in wineries and beverage industries
- Extremely durable and easy clean interior wall finish

APPLICATION INSTRUCTIONS

Surface Preparation

Ensure the substrate is in clean, dry and sound condition. The surface must be free of dirt, oil, grease and loose material. Remove oil using Omniwash detergent or similar. Any loose or bubbling paint must be removed by diamond grinding. Diamond grinding is highly recommended in most situations.

New or very smooth concrete should be either etched with Hydrochloric Acid then thoroughly waterblasted or alternatively diamond ground.

Cracks can be cut out using a diamond cutting blade on an angle grinder, then filled with Cretex SL epoxy resin. Refer to Cretex SL Data sheet.

MIXING DIRECTIONS

Wear impervious nitrile gloves and eye protection.

1/Stir the Part A very thoroughly to ensure that no resin has settled.

2/Combine Part A with Part B equal quantities by volume (1:1).

3/Immediately thoroughly mix for at least 1 minute ensuring a consistent mix. A spiral mixer on a variable-speed power drill is recommended. Ensure that no unmixed product is on the sides or bottom of the pail.

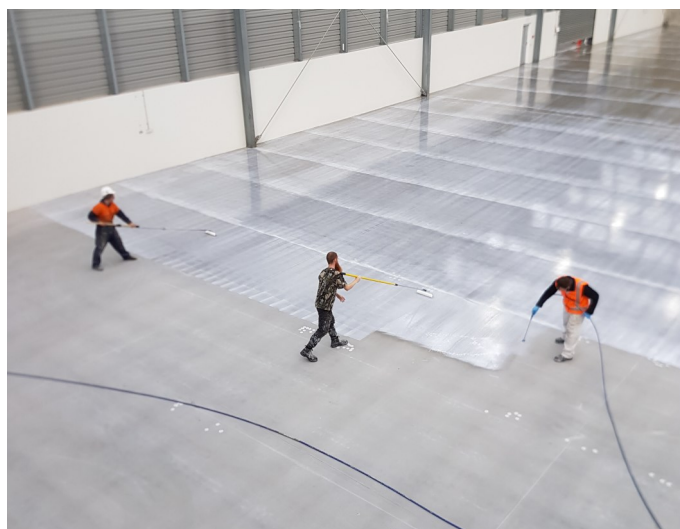
4/Pour the mixed material into a clean pail. Mix again briefly.

5/First coat only on unpainted concrete. Thin 20% with clean water to aid the penetration.

Important-First Coat: Combine Part A and B together, mix thoroughly, add the measured amount of water then mix thoroughly again.

APPLICATION

Once mixed the working time is 2 hours @ 20°C, or 1½ hours @ 25°C. Apply the mixed Epotread W50 Clear to the prepared surface evenly by roller using a 10mm microfibre roller sleeve. If using an airless sprayer, the first coat application should be assisted with a roller to ensure that



no air is trapped in the substrate. Thin 20% with clean water for the first coat only. Avoid thinning for subsequent coats. Two coats recommended.

CLEANING OF TOOLS

Equipment and tools should be cleaned immediately after use with hot water and detergent. A new roller sleeve is recommended for each coat. Cured material can be removed with fine sandpaper.

SPECIFICATION CLAUSE

Concrete areas so designated shall be coated with Epotread W50 Clear waterbased epoxy as supplied by Regis Coatings. This shall be applied to the prepared surface in accordance with the Regis Coatings current product data sheet.

PACKAGING

Epotread W50 Clear is available in 4 litre, 8 litre and 20 litre packs.

Each pack consists of two components (Part A and Part B).

The total quantity comprises the pack size, eg. 20 litre pack includes 10 litres of Part A plus 10 litres of Part B.

Phone tollfree
0800 542 542

www.regiscoatings.co.nz



PRODUCT DATA SUMMARY

Property	Typical Values
Colour, wet	Part A: White liquid epoxy resin Part B: Amber liquid
Odour	Low odour, waterbased
Pack sizes available	4 litre, 8 litre, 20 litre
Coverage rate	10 m ² / litre per coat
Mix ratio	1:1 equal parts by volume
Pot life once mixed	2 hours at 20°C or 1½ hours at 25°C
Application Temperature Range	8°C to 30°C
Specific gravity	1.09kg/litre (A + B combined)
Touch dry time	10 hours at 20°C
Application	Brush, roller or airless sprayer
Number of coats required	2 coats on most surfaces 1 coat to dust seal concrete
Re-coat time	12 hours at 20°C. Surface to be tack-free
Light foot traffic	12 hours at 20°C
Light vehicle traffic	36 hours at 20°C
Full Cure	4-6 days at 20°C
VOC Content	39 grams per litre
CRF Value	>11.0 Non-Directional (kW/m ²)
Clean up	Warm water and detergent while wet
Storage	Store indoors between 8°C and 20°C
Shelf life	12 months in well sealed pails

Actual values may vary from the samples tested.

TECHNICAL SUPPORT

Further information is available on our full range of epoxy floor repair resins, concrete sealers, waterproofing and roof coatings. Visit our website at www.regiscoatings.co.nz or phone Tollfree **0800 542 542** to request brochures or a site visit.

HEALTH AND SAFETY

Flammability: Non flammable.

Skin contact: Wear impervious gloves such as nitrile disposable gloves. Occasional contact is unlikely to have any adverse effect except on particularly sensitive skin. As a general precaution, avoid repeated or prolonged contact. Remove skin contamination when wet with water. Use a proprietary hand cleaner if the product has dried.

Eye Contact: As eyes are a sensitive area, contact should be avoided. Wear safety glasses while mixing and applying. In the event of accidental contact, rinse immediately with plenty of clean water.

Consult a doctor.

Inhalation: Use in well ventilated areas and avoid inhalation. This product is not likely to cause breathing difficulty, but if breathing problems occur, move the person to fresh air and obtain medical attention.

Oral ingestion: With proper handling oral ingestion should not occur. The possibility can be minimized by not consuming food in the working area and by washing hands thoroughly before eating and drinking.

Spillage: Unused material should be disposed of in accordance with local regulations.

Do not dispose of unused material into drains.

Disposal of containers: Do not leave empty containers on the work site where any residue could be a hazard to children or animals. Replace lids and remove all containers to a central disposal point.



The information provided in this technical bulletin is as up-to-date and correct in detail as possible and is intended to give a fair description of the product and its capabilities. The user of these materials must satisfy themselves with the suitability for a particular application. If unsure about use with certain chemicals, please contact the manufacturer.



MANUFACTURED BY:

Regis Coatings Ltd

127 Antigua Street, Addington, Christchurch 8024, NZ

Phone: 64 3 962 6387 Freephone: 0800 542 542

Email: sales@regiscoatings.co.nz Website: www.regiscoatings.co.nz

Phone tollfree
0800 542 542

www.regiscoatings.co.nz

